

Hybrid Printer
HSP7000

Software Manual
Mac OS X



Notice:

- Mac, MacOS, MacBook, iMac are trademarks of Apple Inc., registered in the U.S. and other countries.
- The information in this manual is subject to change without notice.
- STAR MICRONICS CO., LTD. has taken every measure to provide accurate information, but assumes no liability for errors or omissions.
- STAR MICRONICS CO., LTD. is not liable for any damages resulting from the use of information contained in this manual.
- Reproduction in whole or in part is prohibited.

Table of Contents

1. Installation/Uninstallation Procedures	1
1.1 Installing Star Printer Drivers	1
1.2 Registering the Printer	5
1.3 Uninstalling Star Printer Drivers	11
2. Setting Printer Functions.....	14
2.1 Function List	15
3. Setting Paper Size	18
3.1 Setting Paper Size with Default	18
3.2 Settable Paper Sizes	19
4. Guidelines for Using an Ethernet Environment	20
4.1 Setting a Temporary IP Address.....	20
4.2 Setting the IP Address << StarPrinter TELNET Utility >>	22
5. Guidelines for Using the lpr Command	25
5.1 Function List	26
6. Confirmed Operating Environments	28
7. Revision History	29

Introduction

This printer driver supports Mac OS X v10.5/v10.6 on Intel Macs.

The printer's IP address must be set in advance to use a printer that supports LAN using this driver. If your LAN environment does not allow acquisition of an IP address from a DHCP server, set the IP address to the printer in advance. See 4. Guidelines for Using an Ethernet Environment for details on how to set the IP address for the printer.

1. Installation/Uninstallation Procedures

Cautions: The account with administrative privilege for the PC should install/uninstall this driver.

1.1 Installing Star Printer Drivers

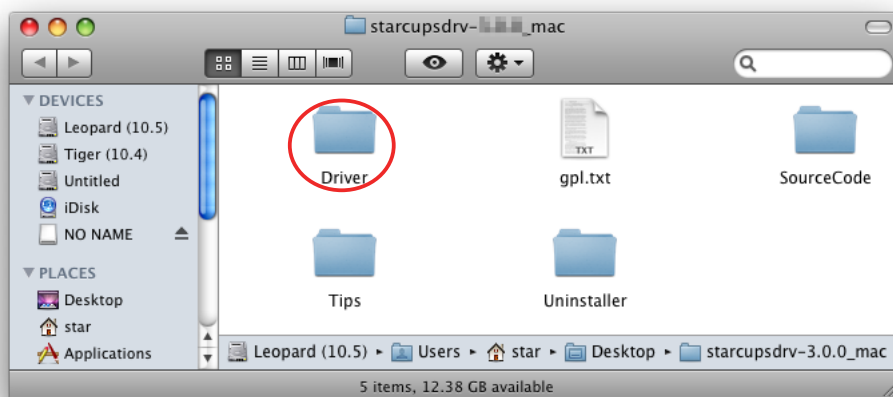
To install the driver, proceed as follows.

Important: When using a USB interface, turn on the printer's power after performing "1.1 Installing Star Printer Drivers".

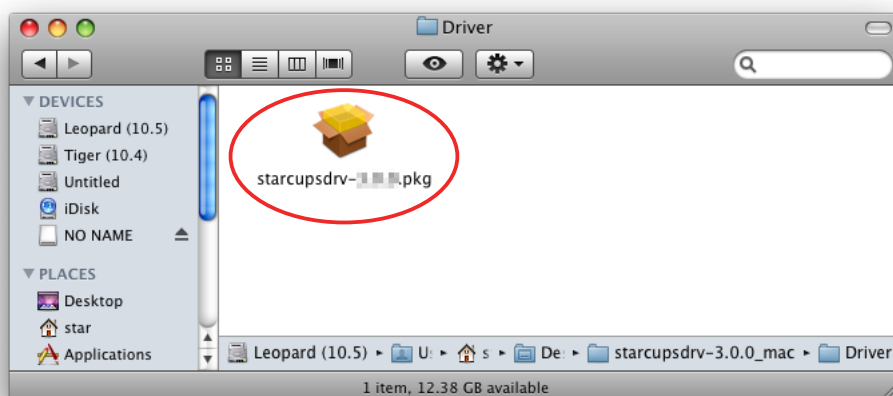
1. Place the "starcupsdrv-x.xx.x_mac_yyyymmdd.zip" file on your desktop and expand it by double-clicking on the file.



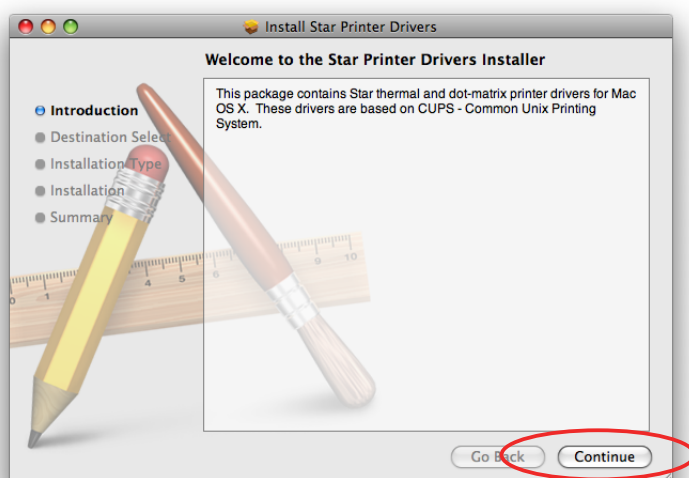
2. The screen below appears by double-clicking the expanded <starcupsdrv-x.xx.x_mac> file. Click on the "Driver" folder to open it.



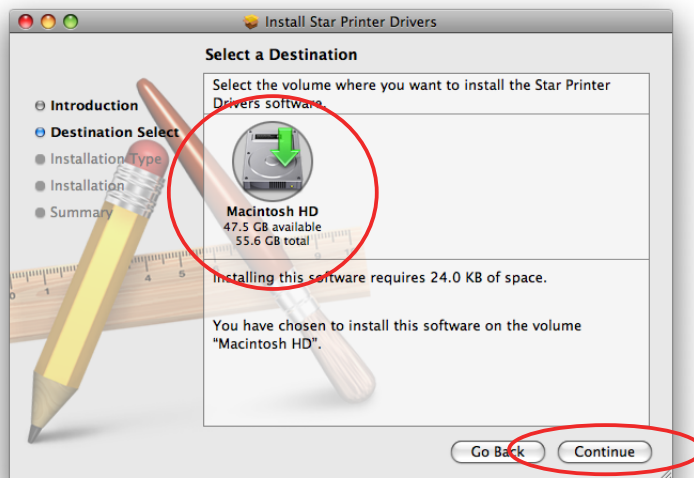
3. The screen below is displayed.
Double-click <starcupsdrv-x.xx.x.pkg> to begin the installation.



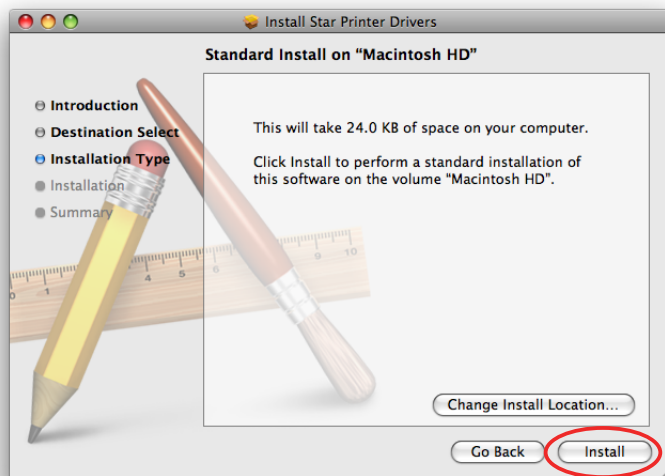
4. The following window is displayed.
Click [Continue].



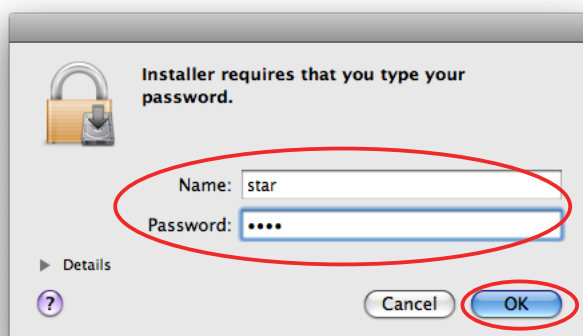
5. Select the harddisk to install with the program, then click [Continue].



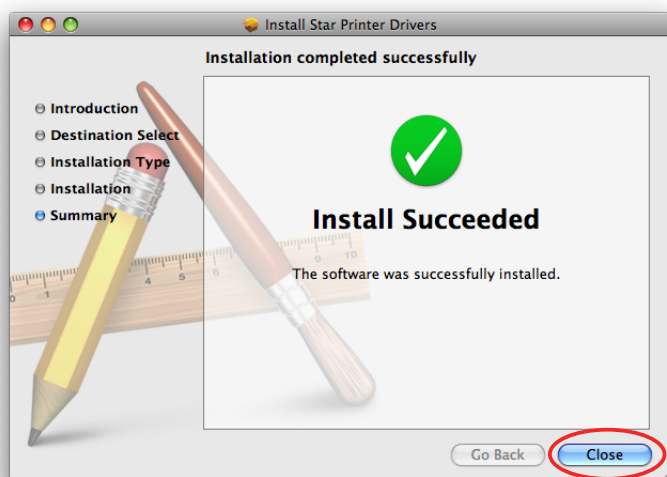
6. Click [Install] to start the installation.



7. If the confirmation window shown below is displayed, enter the user name and password having administrator rights, then click [OK].



8. The installation ends successfully.
When the installation has ended successfully, the window shown below is displayed. Click [Close].



1.2 Registering the Printer

Procedures for registering the printer differ according to the type of interface you use. See the page relating to your environment.

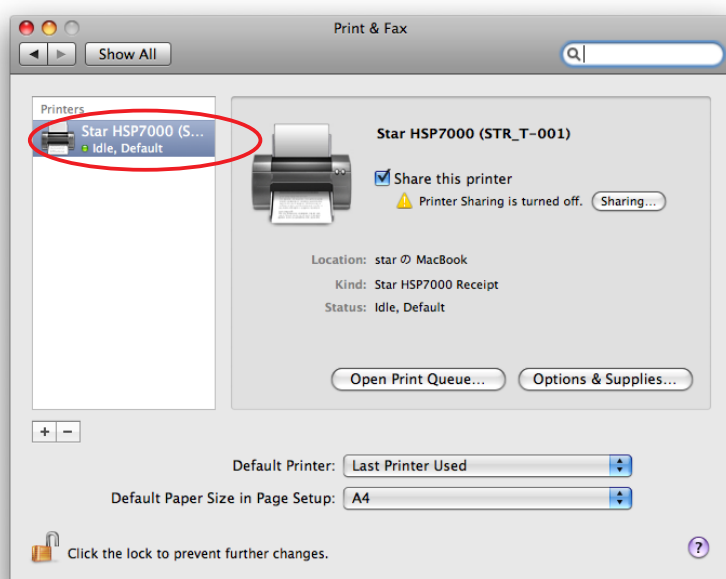
1.2.1 When using a USB Interface

Caution : When using the HSP7000 USB interface model, set DIP switches 1-5 and 1-8 to OFF. For details on the DIP switches, refer to the separate Hardware Manual.

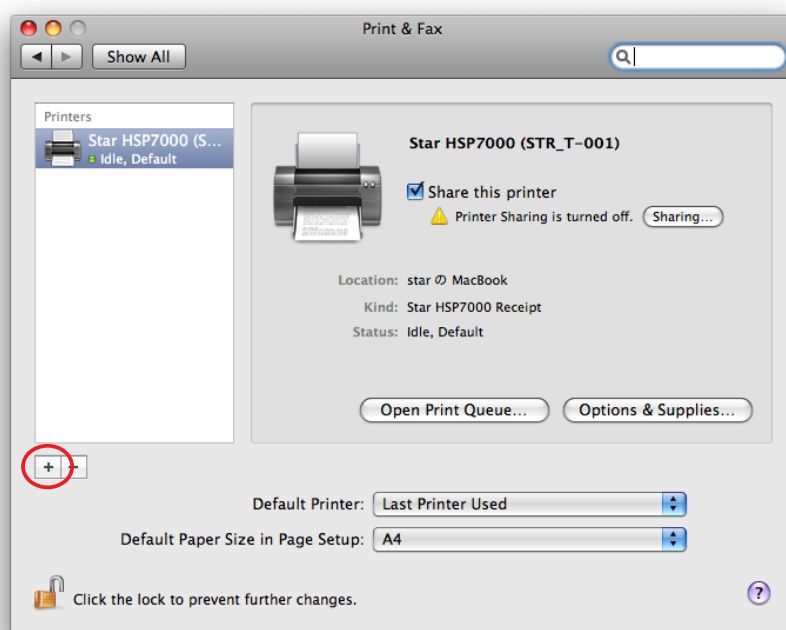
1. In the Apple mark in the menu bar, open [System Preferences] and click on the [Print & Fax] icon.



2. Connect the printer, and then turn on the printer's power switch.
The Plug and Play feature detects the connection of the printer hardware and automatically installs the driver software.

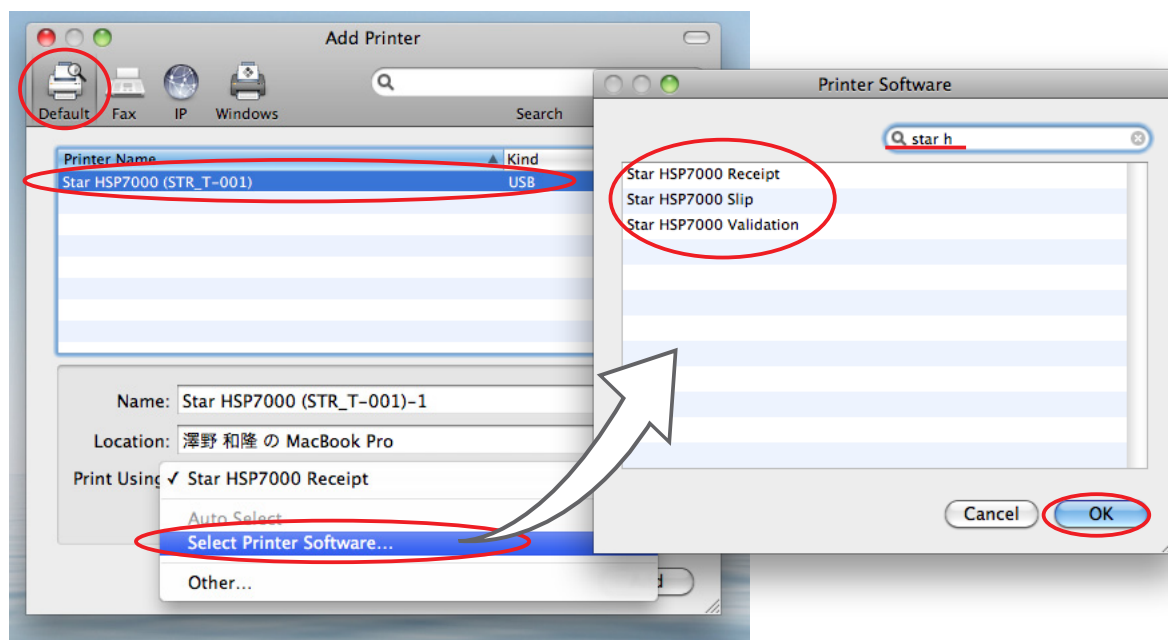


- Click [+] to use the Slip and Validation driver.

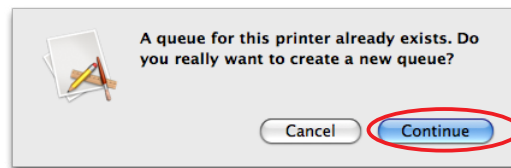


- Select the USB printer created using plug-and-play from the "Default," make the following settings and click [Add].

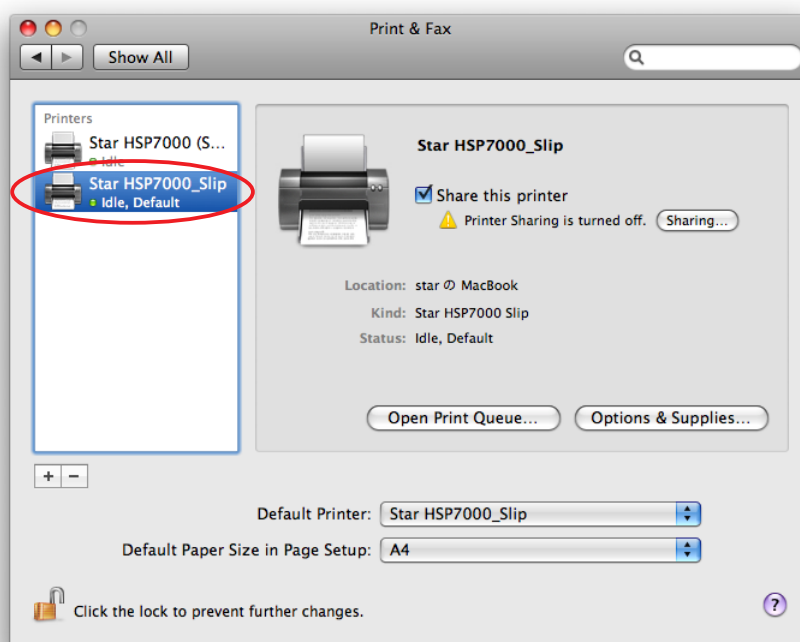
Name: Arbitrary character string (Change the name from the name of the receipt driver displayed.)
 Print Using: "Select the driver to use..." or "Select Printer Software..."
 Select the driver to use.



- When adding a driver after the second model, a confirmation screen for creating a new queue is displayed. Click [Continue].



- If the name of the specified printer is added to the printer list, the printer has been added. If necessary, return to #3 above and added all the required printer drivers.

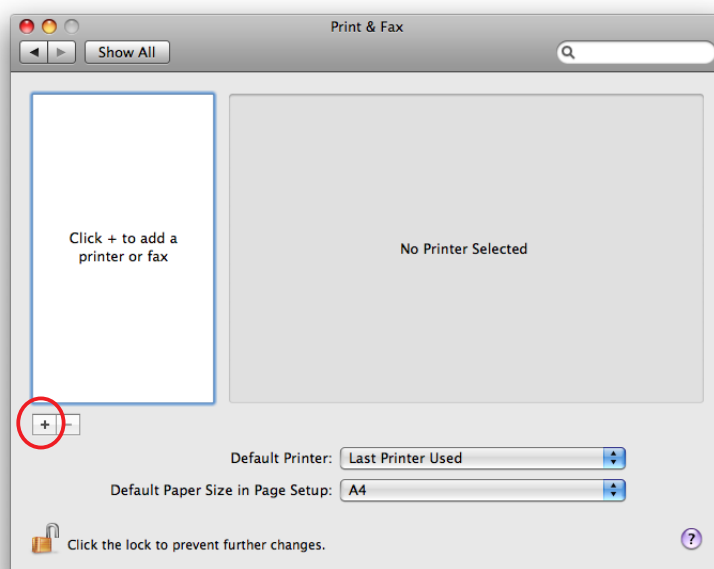


1.2.2 When using Ethernet Interface

1. In the Apple mark in the menu bar, open [System Preferences] and click on the [Print & Fax] icon.

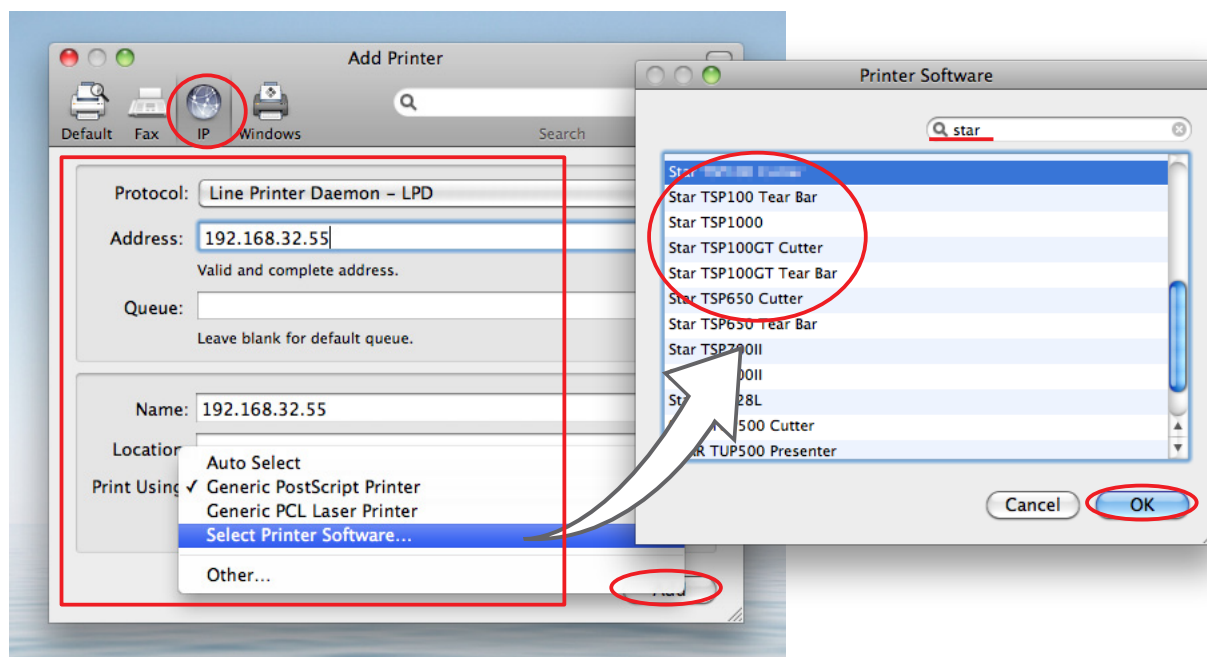


2. The Print & Fax window appears.
Click on [+].



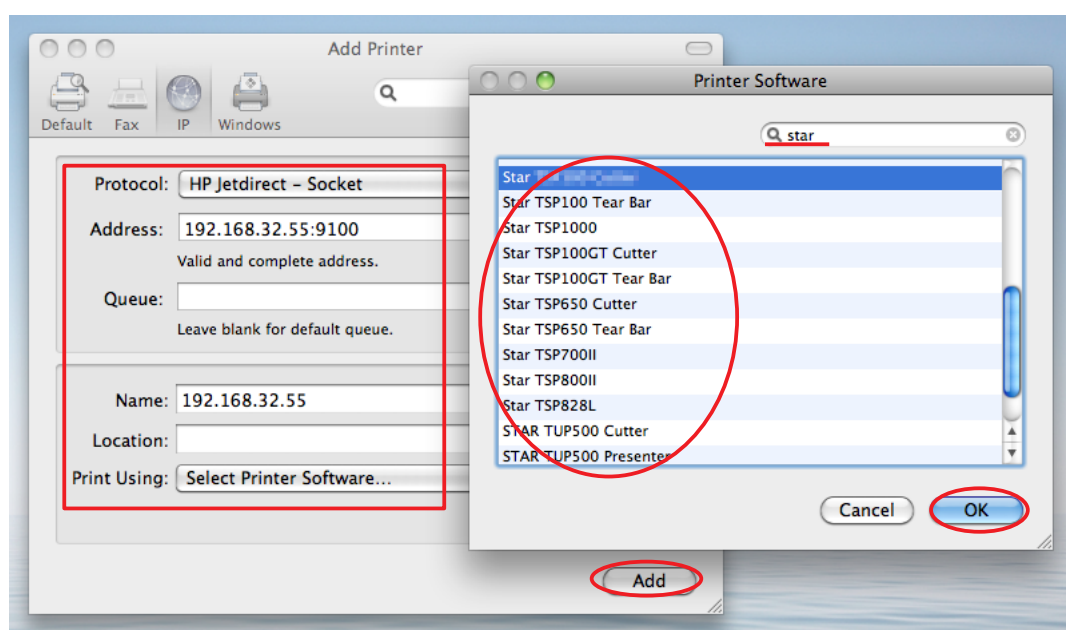
3. From the "IP", make the following settings and click on [Add].

- Protocol: Line Printer Daemon - LPD
 Address: IP address of printer being set (Check in self-print)
 Queue: Any character string (Printer cannot be used if left blank.)
 Name: Any character string (The IP address is automatically input by default.)
 Print Using: "Select the driver to use..." or "Select printer software..."
 Select the driver to use.

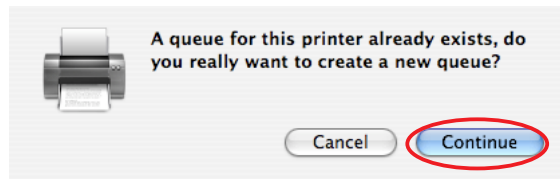


Point! When using port 9100, set the following.

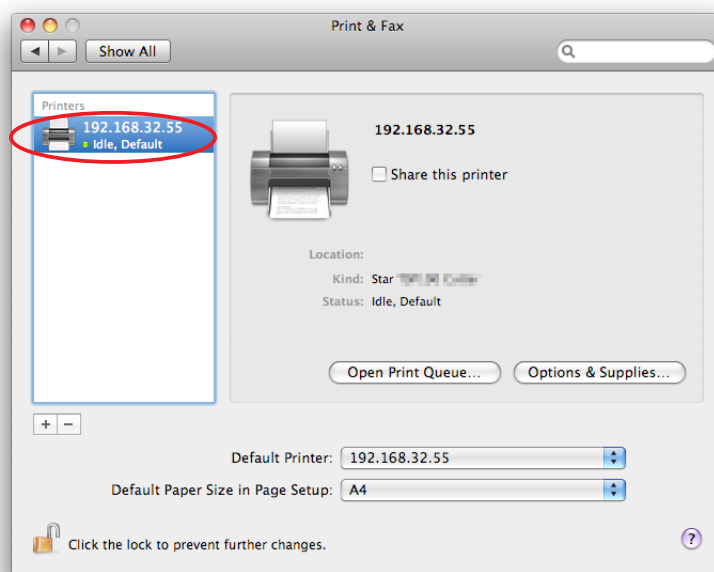
- Protocol: HP Jet Direct - Socket
 Address: [IP address of printer being set] : 9100
 Print Using: "Select the driver to use..." or "Select printer software..."
 Select the driver to use.



- When adding a driver after the second model, a confirmation screen for creating a new queue is displayed. Click [Continue].



- If the name of the specified printer is added to the printer list, the printer has been added. If necessary, return to #2 above and added all the required printer drivers.

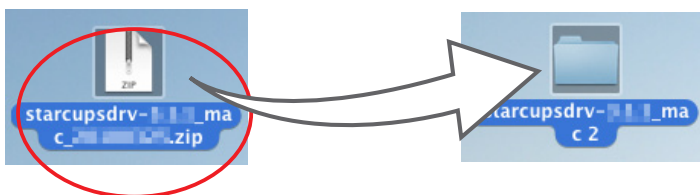


1.3 Uninstalling Star Printer Drivers

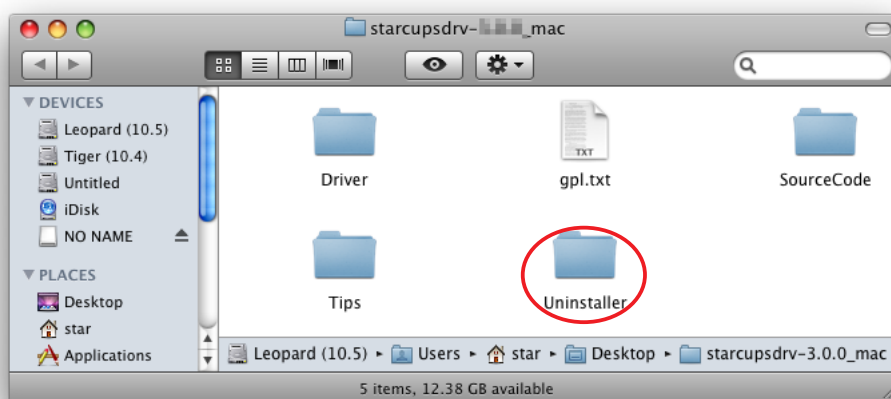
To uninstall the driver, proceed as follows.

Important: When you uninstall the Star Printer Driver, all drivers for Star Printers installed on your Macintosh computer are deleted.

1. Turn off the power switch of the Printer.
2. Double-click [starcupsdrv-x.xx.x_mac_yyyymmdd.zip] you copied to your desktop to decompress it.



3. The screen below appears by double-clicking the expanded <starcupsdrv-x.xx.x_mac> file. Double-click on the "Uninstaller" folder to open it.



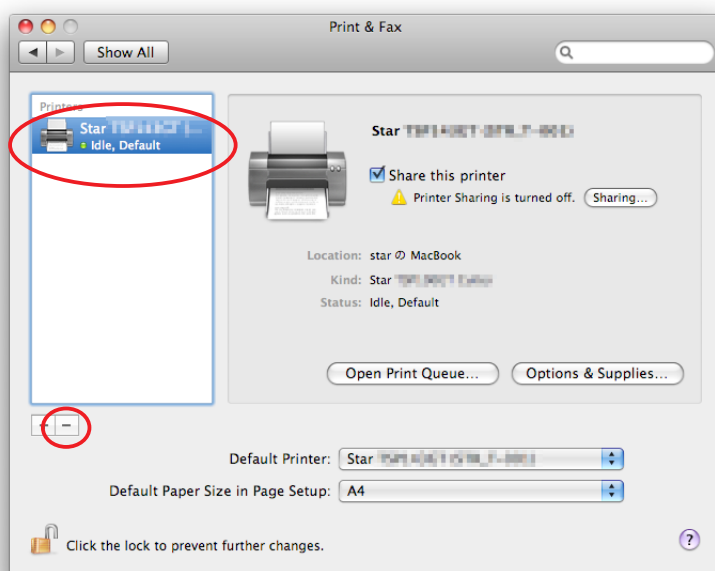
4. Copy "uninstaller.sh" to your home directory.



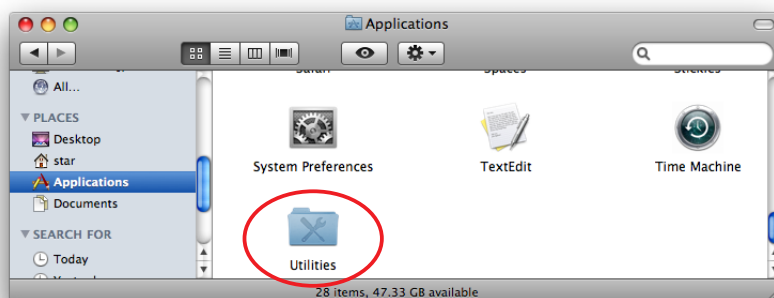
5. In the Apple mark in the menu bar, open [System Preferences] and click on the [Print & Fax] icon.



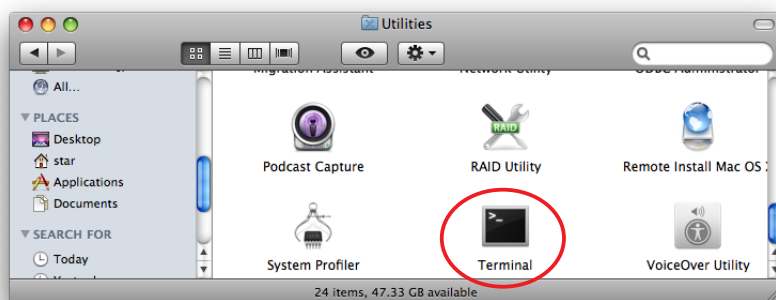
6. Delete the entire Star printer queue from the printers list.



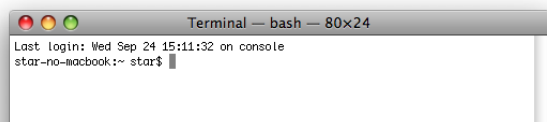
7. Startup the Finder from the Mac OS X Dock and click [Applications] - [Utilities].



8. Click on [Terminal].

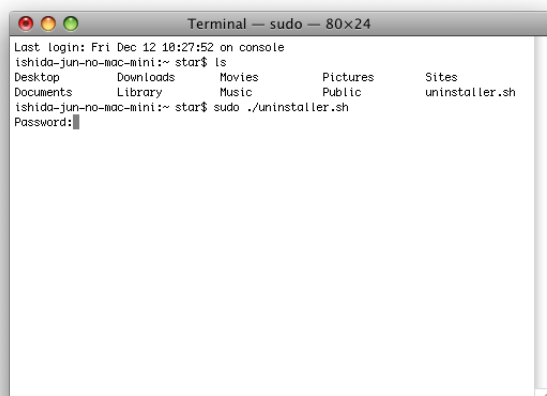


9. The terminal starts up.



10. Uninstall the Star Printer Driver by running the following command on your terminal.
When starting up, you will be prompted to input your user password.

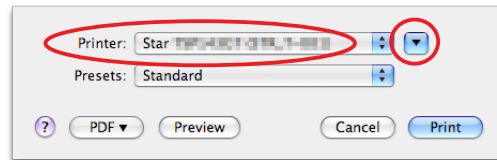
sudo ./uninstaller.sh



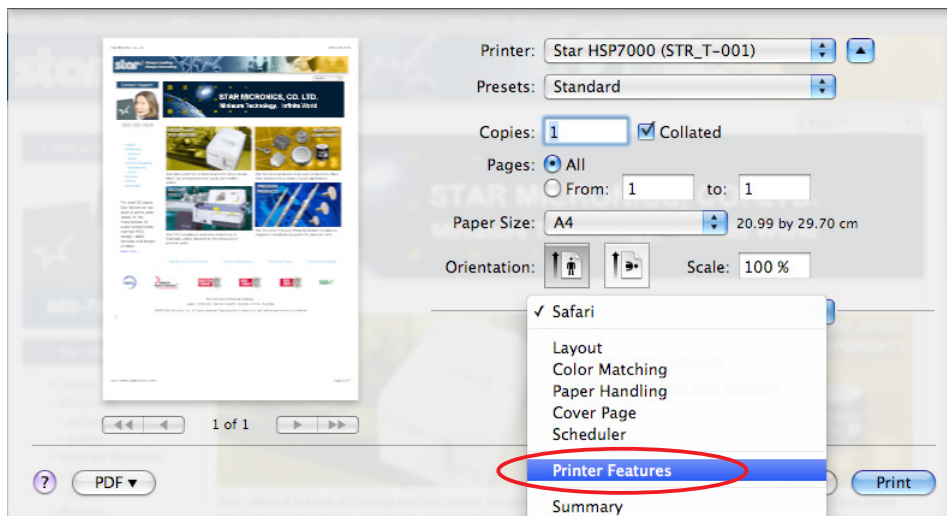
2. Setting Printer Functions

Use the dialog box opened by [File] - [Print] in the Mac OS X menu.

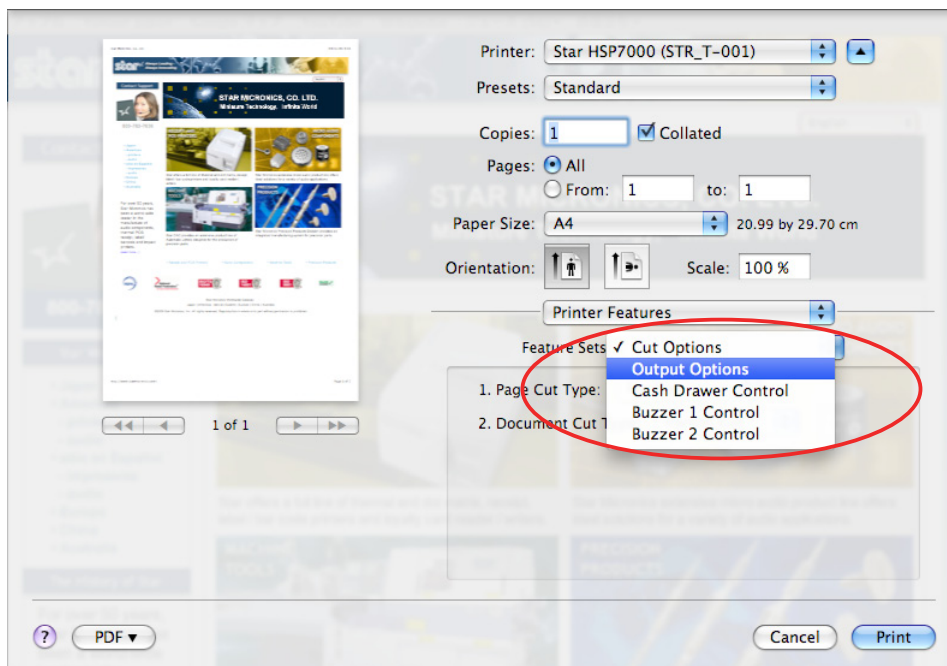
From the "Printer:" pull-down menu, select the printer name to set, then click [▼] to display the details.



Select "Printer Features" from the setting pull-down menu.



"Feature Sets:" Customizes printer operation.



2.1 Function List

Drivers supporting each function are different.

For drivers supporting each function, see **Receipt** / **Slip** / **Validation** displayed beside the function name.

■ Cut Option

Receipt

• Page Cut Type:

Sets the cutting method for the end of all pages, excluding the last page.

Setting Value	Default Value	Details
No Cut	○	Does not perform a cut and page feed.
Partial Cut		Feeds paper to cutting position, then cuts the paper, leaving one uncut point in center of paper.

• Document Cut Type:

Sets the cutting method for the last page.

Setting Value	Default Value	Details
No Cut		Does not perform a cut and page feed.
Partial Cut	○	Feeds paper to cutting position, then cuts the paper, leaving one uncut point in center of paper.

■ Output Options

Receipt

• Print Speed:

Sets the printing speed. Note that setting also affects the print quality.

Setting Value	Default Value	Details
High	○	Print speed has priority over quality.
Middle		Print quality and speed are in the middle.
Low		Best quality, but slow print speed.

• Print Density:

Sets the printing density.

Setting Value	Default Value	Details
-3 to -1		Larger value with -(minus) makes print density lighter.
Standard	○	Prints with normal density.
+1 to +3		Larger value with +(plus) makes print density darker.

• Page Type:

Sets the page type.

Setting Value	Default Value	Details
Variable Length	○	Does not output blank data until the bottom of the page. Receipt ends after final data is printed.
Fixed Length		Outputs blank data as a blank until the bottom of the page. Receipt ends after printing the length specified by paper size.

Output Option

Slip

Validation

• Bidirectional Printing:

Use this feature to select either unidirectional or bidirectional printing. Note that the setting affects both the print speed and the print quality. Available settings are as follows.

Setting Value	Default Value	Details
Budirectional	○	Printer prints in both directions.
Unidirectional		Printer prints in one direction only.

• Resolution:

Sets the print quality (resolution).

Setting Value	Default Value	Details
160 x 72 DPI	○	Print width is 160 dpi; print height is 72 dpi.
80 x 72 DPI		Print width is 80 dpi; print height is 72 dpi.

Cash Drawer Control

Receipt

Slip

Validation

• Cash Drawer:

Sets the operations of the cash drawer.

Setting Value	Default Value	Details
Do Not Open Drawers	○	No cash drawer drive.
Open Drawer 1		Drives cash drawer 1 immediately after printing.
Open Drawer 2		Drives cash drawer 2 immediately after printing.
Open Drawer 1 and 2		Drives cash drawers 1 and 2 immediately after printing.

• Cash Drawer 1 Pulse Width:

Sets the cash drawer pulse width.

Setting Value	Default Value	Details
10 milliseconds		Sets the pulse width to 0.01 seconds.
100 milliseconds		Sets the pulse width to 0.1 seconds.
200 milliseconds	○	Sets the pulse width to 0.2 seconds.
300 milliseconds		Sets the pulse width to 0.3 seconds.
400 milliseconds		Sets the pulse width to 0.4 seconds.
500 milliseconds		Sets the pulse width to 0.5 seconds.
600 milliseconds		Sets the pulse width to 0.6 seconds.
700 milliseconds		Sets the pulse width to 0.7 seconds.
800 milliseconds		Sets the pulse width to 0.8 seconds.
900 milliseconds		Sets the pulse width to 0.9 seconds.
1000 milliseconds		Sets the pulse width to 1.0 seconds.
1100 milliseconds		Sets the pulse width to 1.1 seconds.
1200 milliseconds		Sets the pulse width to 1.2 seconds.

Note: 1) Do not enable the cash drawer and buzzer at the same time.
2) The pulse width for cash drawer 2 is fixed at 200 milliseconds.

■ Buzzer 1 Control and Buzzer 2 Control

Receipt

Slip

Validation

• Buzzer 1 (or Buzzer 2):

Sets the drive of either buzzer 1 or buzzer 2.

Setting Value	Default Value	Details
No Use	○	Buzzer 1 or buzzer 2 is not used.
Document Top		Executes buzzer 1 (or 2) at the top of the document.
Document Bottom		Executes buzzer 1 (or 2) at the bottom of the document.

• Buzzer 1 (Buzzer 2) - On Time:

Sets the time to ring buzzer 1 or buzzer 2.

Setting Value	Default Value	Details
20 milliseconds	○	Sets to 0.02 seconds.
40 milliseconds		Sets to 0.04 seconds.
100 milliseconds		Sets to 0.1 seconds.
200 milliseconds		Sets to 0.2 seconds.
500 milliseconds		Sets to 0.5 seconds.
1000 milliseconds		Sets to 1.0 seconds.
2000 milliseconds		Sets to 2.0 seconds.
5000 milliseconds		Sets to 5.0 seconds.

• Buzzer 1 (Buzzer 2) - Off Time:

Sets buzzer 1 or buzzer 2 off time.

Setting Value	Default Value	Details
20 milliseconds	○	Sets to 0.02 seconds.
40 milliseconds		Sets to 0.04 seconds.
100 milliseconds		Sets to 0.1 seconds.
200 milliseconds		Sets to 0.2 seconds.
500 milliseconds		Sets to 0.5 seconds.
1000 milliseconds		Sets to 1.0 seconds.
2000 milliseconds		Sets to 2.0 seconds.
5000 milliseconds		Sets to 5.0 seconds.

• Buzzer 1 (Buzzer 2) - Repeat:

Sets the number of times to ring buzzer 1 (or buzzer 2) driven by the timing set at 1:Buzzer 1 (or Buzzer 2).

The buzzer will stop regardless of the number of times set to ring by pressing the "FEED".

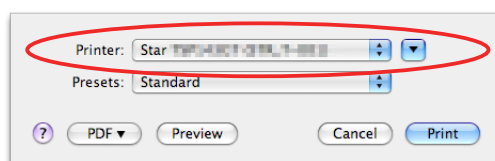
Setting Value	Default Value	Details
1	○	Rings buzzer 1 (or buzzer 2) Once.
2		Rings buzzer 1 (or buzzer 2) twice.
3		Rings buzzer 1 (or buzzer 2) three times.
5		Rings buzzer 1 (or buzzer 2) five times.
10		Rings buzzer 1 (or buzzer 2) ten times.
15		Rings buzzer 1 (or buzzer 2) fifteen times.
20		Rings buzzer 1 (or buzzer 2) twenty times.

Note: 1) Do not enable the cash drawer and buzzer at the same time.
2) The buzzer ringing time and off time should not exceed 90 seconds in total.

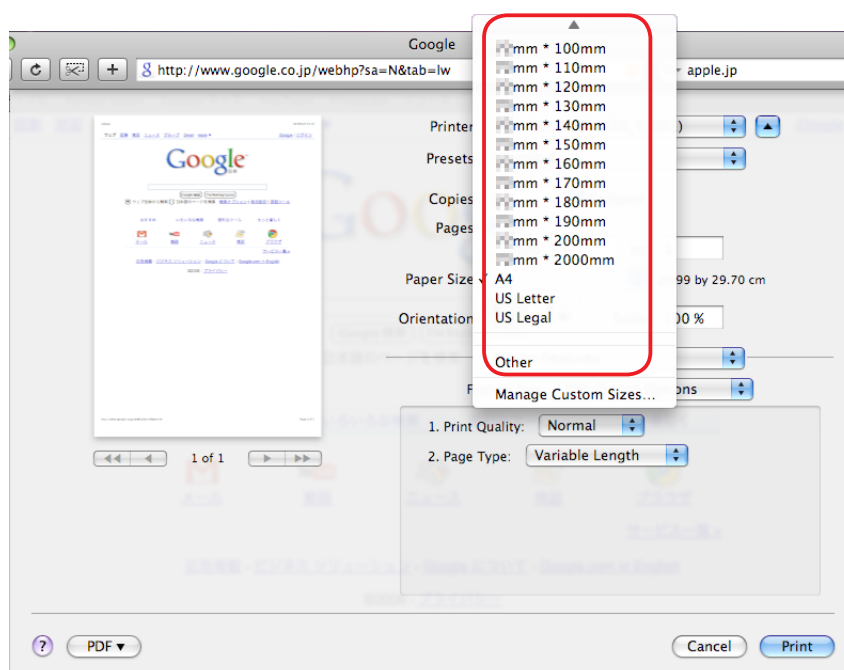
3. Setting Paper Size

3.1 Setting Paper Size with Default

From the menu bar on Mac OS X, open [File] - [Printers].
Select the printer to set from the "Printer:" pull-down menu.
If details are not displayed, click on [▼] to display them.



Next, select the paper size from the Paper Size pull-down menu.



Point! When a paper size is selected that exceeds the maximum printing width, the print is shrunk to fit the maximum printing width.

3.2 Settable Paper Sizes

The following paper sizes are available and can be set.

Paper Size	Supported Drivers		
	Receipt	Slip	Validation
50.8 * 30mm	○		
50.8 * 40mm	○		
50.8 * 50mm	○		
50.8 * 60mm	○		
50.8 * 70mm	○		
50.8 * 80mm	○		
50.8 * 90mm	○		
50.8 * 100mm	○		
50.8 * 110mm	○		
50.8 * 120mm	○		
50.8 * 130mm	○		
50.8 * 140mm	○		
50.8 * 150mm	○		
50.8 * 160mm	○		
50.8 * 170mm	○		
50.8 * 180mm	○		
50.8 * 190mm	○		
50.8 * 200mm	○		
50.8 * 2000mm	○		
68 * 30mm	○		
68 * 40mm	○		
68 * 50mm	○		
68 * 60mm	○		
68 * 70mm	○		
68 * 80mm	○		
68 * 90mm	○		
68 * 100mm	○		
68 * 110mm	○		
68 * 120mm	○		
68 * 130mm	○		
68 * 140mm	○		
68 * 150mm	○		
68 * 160mm	○		
68 * 170mm	○		
68 * 180mm	○		
68 * 190mm	○		
68 * 200mm	○		
68 * 2000mm	○		

Paper Size	Supported Drivers		
	Receipt	Slip	Validation
72 * 30mm	○		
72 * 40mm	○		
72 * 50mm	○		
72 * 60mm	○		
72 * 70mm	○		
72 * 80mm	○		
72 * 90mm	○		
72 * 100mm	○		
72 * 110mm	○		
72 * 120mm	○		
72 * 130mm	○		
72 * 140mm	○		
72 * 150mm	○		
72 * 160mm	○		
72 * 170mm	○		
72 * 180mm	○		
72 * 190mm	○		
72 * 200mm	●		
72 * 2000mm	○		
85 * 254mm		●	
80 * 254mm		○	
75 * 254mm		○	
70 * 254mm		○	
65 * 254mm		○	
60 * 254mm		○	
55 * 254mm		○	
50 * 254mm		○	
45 * 254mm		○	
40 * 254mm		○	
85 * 33mm			●
80 * 33mm			○
75 * 33mm			○
70 * 33mm			○
65 * 33mm			○
60 * 33mm			○
55 * 33mm			○
50 * 33mm			○
45 * 33mm			○
40 * 33mm			○
A4	○		
Letter	○		
Legal	○		

* ● is the default setting value.

In some cases, these settings will not work as expected depending on the application being used to print from.

4. Guidelines for Using an Ethernet Environment

The printer's IP address must be set in advance to use a printer that supports LAN using this driver. If your LAN environment does not allow acquisition of an IP address from a DHCP server, set the IP address to the printer in advance.

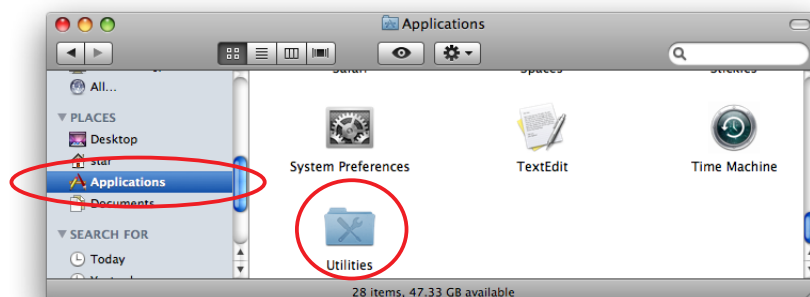
4.1 Setting a Temporary IP Address

Use the following procedures to set a temporary IP address to the printer.

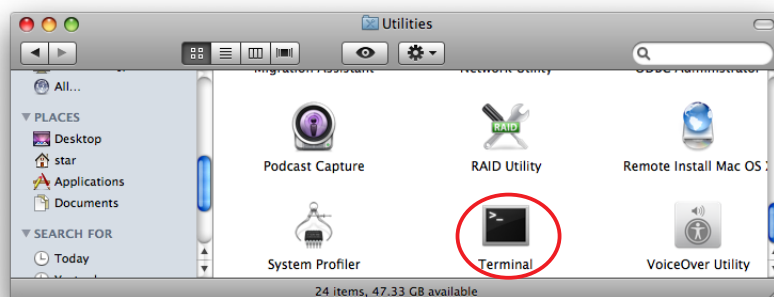
Important: Printer settings should be done by a user with administrator rights.

Point! A MAC address of the printer to be set is necessary for the temporary IP address. Confirm the MAC address in a self-print from the printer. See the Hardware Manual for details on running a self-print.

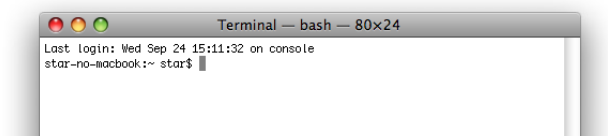
1. Connect the Ethernet cable to the printer and turn the power ON to the printer.
2. Startup the Finder from the Mac OS X Dock and click [Applications] - [Utilities].



3. Click on [Terminal].



3. The terminal starts up.



Execute the following command in the terminal to set a temporary IP address to the printer.

1. `sudo arp -d [Printer temporary IP address]`
2. `sudo arp -s [Printer temporary IP address] [Printer MAC address]`
3. `ping -c 4 [Printer temporary IP address]`
4. `sudo arp -d [Printer temporary IP address]`

Example of temporary IP address (192.168.222.217)

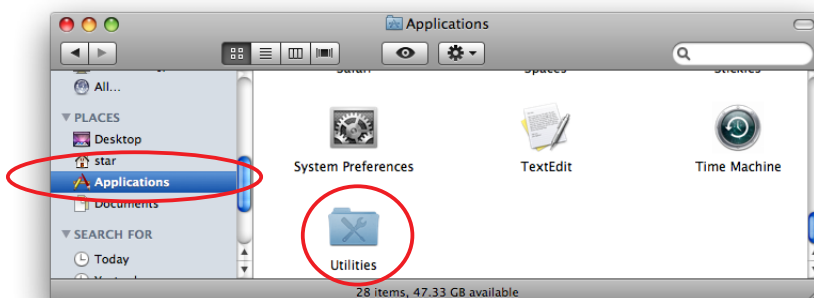
```
sudo arp -d 192.168.222.217
sudo arp -s 192.168.222.217 00:11:62:00:03:4D
ping -c 4 192.168.222.217
sudo arp -d 192.168.222.217
```

Note: The temporary IP address set here is erased when the printer power is turned off.
Continue by setting the IP address. (From (2) in section 4.2.)

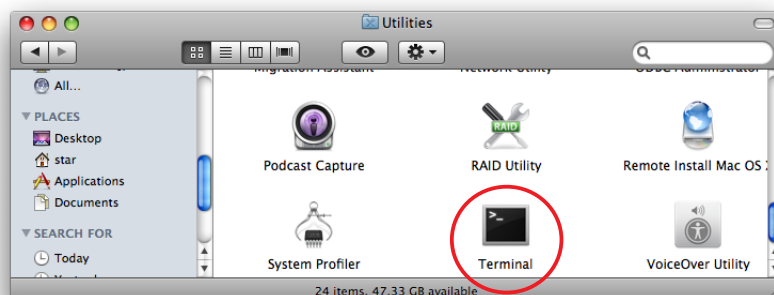
4.2 Setting the IP Address << StarPrinter TELNET Utility >>

The Telnet command connects directly to the printer to make settings.

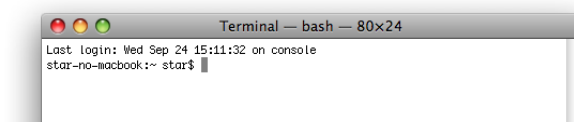
1. Connect the Ethernet cable to the printer and turn the power ON to the printer.
2. Startup the Finder from the Mac OS X Dock, and click [Applications] - [Utilities].



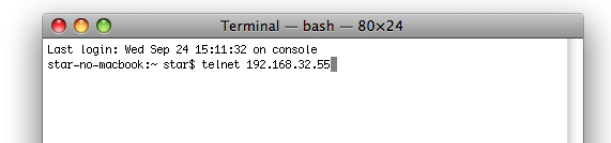
3. Click on [Terminal].



4. The terminal starts up.



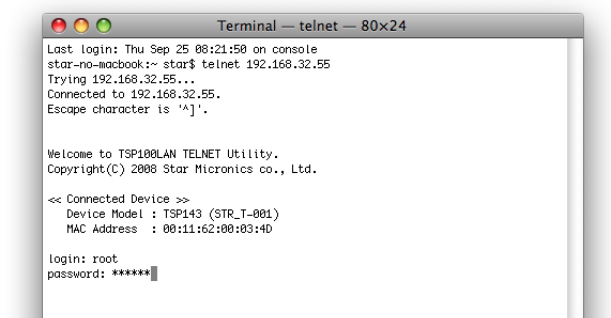
5. Use the Telnet command to connect to the printer to set.



Ex. >telnet 192.168.222.217 (The IP address of the printer to be set.)

Note: You cannot connect to a printer that does not have an IP address. See section 4.1 Setting a Temporary IP Address for details on setting such an address on the printer in advance.

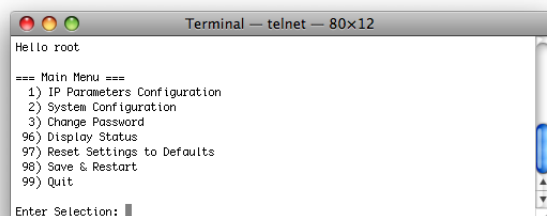
6. Log-in to the printer to be set as a "root" user.
The default password is "public."
To change the password, input the changed password.



7. The following menu is displayed.

- 1) IP Parameters Configuration
 - 2) System Configuration
 - 3) Change Password
 - 96) Display Status
 - 97) Reset Settings to Defaults
 - 98) Save and Restart
 - 99) Quit
- Enter Selection

Input the number that corresponds to your selection.



8. When all settings are completed, save the changes using "98(Save and Restart)" - "1(Save & Restart device & Configuration printing)", or "2 (Save & Restart device)". The settings of the printer will be saved. Reset the printer.

Example : Set the fixed IP address <192.168.222.55> on the printer set with the temporary IP address <192.168.222.217>, the check printing the setting contents.

```
>telnet 192.168.222.217
login : root
password : ***** ( Use "public" when not making changes. )
Enter Selection : 1 ( IP Parameters Configuration )
Enter Selection : 1 ( Static )
Enter Selection : 1 ( IP Address )
Enter IP address (x.x.x.x) : 192.168.222.55
Enter Selection : 99 ( Back to IP Address Menu )
Enter Selection : 99 ( Back to Main Menu )
Enter Selection : 98 ( Save & Restart )
Enter Selection : 1 ( Save & Configuration printing & Restart device )
```

* The actual input portions are shown in **bold characters**.

5. Guidelines for Using the lpr Command

When printing using the lpr command from the command line, you can specify options with the following format.

```
$lpr -o [option]=[value] -o [option]=[value] ... [Filename]
```

In [option] • [value], specify the name shown in the command "specify name" in section 5.1 List of Supported Functions".

Also for options not specified, print using the default driver settings.

Point! Use the printer name confirmed using the "lpstat -p" command, when specifying the printer name using the option "-P".

Use Example 1

Printer Name : TUP542__STR_T_001_
File Name : sample1.txt
Paper Size * : 50.8 * 200mm
Margin(top) * : 0mm
Margin(bottom) * : 0mm
Margin(left) * : 0mm
Margin(right) * : 0mm

* This option is not a printer driver option, but an OS standard option.

```
$ lpr -P TUP542__STR_T_001_ -o media="X50D8MMY200MM"  
-o page-top=0 -o page-bottom=0 -o page-left=0  
-o page-right=0 sample1.txt
```

Use Example 2

File Name : sample2.txt
Print Speed : Low

```
$ lpr -o PrintSpeed=2Low sample2.txt
```

Use Example 3

File Name : sample3.txt
Document Cut Type : No Cut

```
$ lpr -o DocCutType=0NoCutDoc sample3.txt
```

5.1 Function List

See section 2.1 Function List for the details on the functions.

	Option Name		Command		Supported Driver		
	option	value	[option]	[value]	Receipt	Slip	Validation
Output Option	Print Speed	High	PrintSpeed	0High	●		
		Middle		1Middle	○		
		Low		2Low	○		
	Print Density	-3	PrintDensity	0Minus3	○		
		-2		1Minus2	○		
		-1		2Minus1	○		
		Standard		3ZERO	●		
		+1		4Plus1	○		
		+2		5Plus2	○		
		+3		6Plus3	○		
	Page Type	Variable Length	PageType	0Variable	●		
		Fixed Length		1Fixed	○		
	Bidirectional Printing	Bidirectional	BidiPrinting	0Bidirectional		●	●
		Unidirectional		1Unidirectional		○	○
	Resolution	160 x 72 DPI	Resolution	160x72dpi		●	●
		80 x 72 DPI		80x72dpi		○	○
Cut Options	Page Cut Type	No Cut	PageCutType	0NoCutPage	●		
		Partial Cut		1PartialCutPage	○		
	Document Cut Type	No Cut	DocCutType	0NoCutDoc	○		
		Partial Cut		1PartialCutDoc	●		
Cash Drawer Control	Cash Drawer	Do Not Open Drawers	CashDrawerSetting	0DoNotOpenDrawers	●	●	●
		Open Drawer 1		1OpenDrawer1	○	○	○
		Open Drawer 2		2OpenDrawer2	○	○	○
		Open Drawer 1 and 2		3OpenDrawer3	○	○	○
	Cash Drawer 1 Pulsh Width	10 milliseconds	CashDrawer1PulseWidth	0Millis10	○	○	○
		100 milliseconds		1Millis100	○	○	○
		200 milliseconds		2Millis200	●	●	●
		300 milliseconds		3Millis300	○	○	○
		400 milliseconds		4Millis400	○	○	○
		500 milliseconds		5Millis500	○	○	○
		600 milliseconds		6Millis600	○	○	○
		700 milliseconds		7Millis700	○	○	○
		800 milliseconds		8Millis800	○	○	○
		900 milliseconds		9Millis900	○	○	○
		1000 milliseconds		10Millis1000	○	○	○
		1100 milliseconds		11Millis1100	○	○	○
		1200 milliseconds		12Millis1200	○	○	○

	Option Name		Command		Supported Driver		
	option	value	[option]	[value]	Receipt	Slip	Validation
Buzzer1 Control / Buzzer2 Control	Buzzer1 / Buzzer2	No Use	Buzzer1Setting /	0NoUse	●	●	●
		Document Top	Buzzer2Setting	1DocumentTop	○	○	○
		Document Bottom		2DocumentBtm	○	○	○
	Buzzer1 - On Time / Buzzer2 - On Time	20 milliseconds	Buzzer1OnTime /	0Millis20	●	●	●
		40 milliseconds	Buzzer2OnTime	1Millis40	○	○	○
		100 milliseconds		2Millis100	○	○	○
		200 milliseconds		3Millis200	○	○	○
		500 milliseconds		4Millis500	○	○	○
		1000 milliseconds		5Millis1000	○	○	○
		2000 milliseconds		6Millis2000	○	○	○
		5000 milliseconds		7Millis5000	○	○	○
	Buzzer1 - Off Time / Buzzer2 - Off Time	20 milliseconds	Buzzer1OffTime /	0Millis20	●	●	●
		40 milliseconds	Buzzer2OffTime	1Millis40	○	○	○
		100 milliseconds		2Millis100	○	○	○
		200 milliseconds		3Millis200	○	○	○
		500 milliseconds		4Millis500	○	○	○
		1000 milliseconds		5Millis1000	○	○	○
		2000 milliseconds		6Millis2000	○	○	○
		5000 milliseconds		7Millis5000	○	○	○
	Buzzer1 - Repeat / Buzzer2 - Repeat	1	Buzzer1Repeat /	0Repeat1	●	●	●
		2	Buzzer2Repeat	1Repeat2	○	○	○
		3		2Repeat3	○	○	○
		5		3Repeat5	○	○	○
		10		4Repeat10	○	○	○
		15		5Repeat15	○	○	○
		20		6Repeat20	○	○	○

* ● is the default setting value.

6. Confirmed Operating Environments

■ Mac OS X 10.5 Intel

Macbook

OS: Mac OS X 10.5.7
CPU: 1.83GHz Intel Core2 Duo
RAM: 512MB 667MHz DDR2 SDRAM

■ Mac OS X 10.6 Intel

iMac

OS: Mac OS X 10.6.2
CPU: 3.06GHz Intel Core2 Duo
RAM: 4GBB 1067MHz DDR2 SDRAM

7. Revision History

[illegible]



URL: <http://www.starmicronics.com/support/>